

Blooming Heights South | Norwalk, Iowa

Plat 1

Lot #	Address	Sq. Ft.	Configuration	Price	Status
1	2005 Autumn Blaze Dr	17,453	Walkout/Corner	\$84,900	Available
2	2009 Autumn Blaze Dr	12,614	Walkout		Spec-Ruby
3	2013 Autumn Blaze Dr	13,398	Walkout		Spec-Amber 2 bed
4	2103 Autumn Blaze Dr	14,893	Walkout	\$97,500	Available
5	2107 Autumn Blaze Dr	10,466	Walkout	\$84,900	Available
6	2111 Autumn Blaze Dr	13,400	Standard/Corner		Sold
7	2008 Crabapple Dr	11,364	Standard		Sold
8	2009 Crabapple Dr	15,150	Standard	\$79,900	Available
9	1921 Crabapple Dr	12,987	Standard	\$82,900	Available
10	1911 Crabapple Dr	14,185	Standard/Corner	\$79,900	Available
11	2201 Autumn Blaze Dr	10,937	Standard	\$82,900	Available
12	2307 Autumn Blaze Dr	16,257	Walkout/Corner Cul De Sac	\$89,900	Available
13	2311 Autumn Blaze Dr	10,739	Walkout Cul De Sac	\$92,900	Available
14	2315 Autumn Blaze Dr	16,842	Walkout Cul De Sac		Sold



10640 Justin Dr. | Urbandale, Iowa 50322

515.243.1191 | kirk@krmdev.com

<https://www.krmdev.com/>

<https://www.tanzanitehomes.com/>



KRM Development and Tanzanite Homes does not guarantee the information describing these properties. Interested parties are advised to independently verify this information through personal inspection or with appropriate professionals. Prices are subject to change without notice.

Revised 9.2021

Blooming Heights South | Norwalk, Iowa

Plat 1

Lot #	Address	Sq. Ft.	Configuration	Price	Status
15	2319 Autumn Blaze Dr	18,373	Walkout Cul De Sac		Sold
16	2323 Autumn Blaze Dr	12,614	Walkout Cul De Sac	\$124,900	HOLD
17	2318 Autumn Blaze Dr	13,398	Walkout Cul De Sac		Sold
18	2314 Autumn Blaze Dr	14,893	Walkout Cul De Sac		Sold
19	2310 Autumn Blaze Dr	13,557	Walkout Cul De Sac		Sold
20	2306 Autumn Blaze Dr	13,301	Walkout Cul De Sac		Sold
21	2302 Autumn Blaze Dr	12,753	Walkout Cul De Sac	\$119,900	Available
22	2216 Autumn Blaze Dr	14,035	Standard		Sold
23	2212 Autumn Blaze Dr	10,357	Standard	\$84,900	Available
24	2208 Autumn Blaze Dr	9,806	Standard	\$79,900	Available
25	2204 Autumn Blaze Dr	9,242	Standard	\$79,900	Available
26	2200 Autumn Blaze Dr	8,838	Standard	\$79,900	Available
27	2122 Autumn Blaze Dr	9,179	Standard	\$77,900	Available
28	2118 Autumn Blaze Dr	9,181	Standard	\$77,900	Available



10640 Justin Dr. | Urbandale, Iowa 50322

515.243.1191 | kirk@krmdev.com

<https://www.krmdev.com/>

<https://www.tanzanitehomes.com/>



KRM Development and Tanzanite Homes does not guarantee the information describing these properties. Interested parties are advised to independently verify this information through personal inspection or with appropriate professionals. Prices are subject to change without notice.

Revised 9.2021

Blooming Heights South | Norwalk, Iowa

Plat 1

Lot #	Address	Sq. Ft.	Configuration	Price	Status
29	2114 Autumn Blaze Dr	8,819	Standard	\$77,900	Available
30	2110 Autumn Blaze Dr	8,775	Standard	\$77,900	Available
31	2106 Autumn Blaze Dr	8,873	Standard		Spec-Amber 3 bed
32	2016 Autumn Blaze Dr or 1913 Silver Maple Dr	12,252	Standard/Corner	\$72,900	Available
33	1914 Silver Maple Dr	10,844	Standard/Corner		Sold
34	1910 Silver Maple Dr	7,001	Standard	\$67,900	Available



10640 Justin Dr. | Urbandale, Iowa 50322

515.243.1191 | kirk@krmdev.com

<https://www.krmdev.com/>

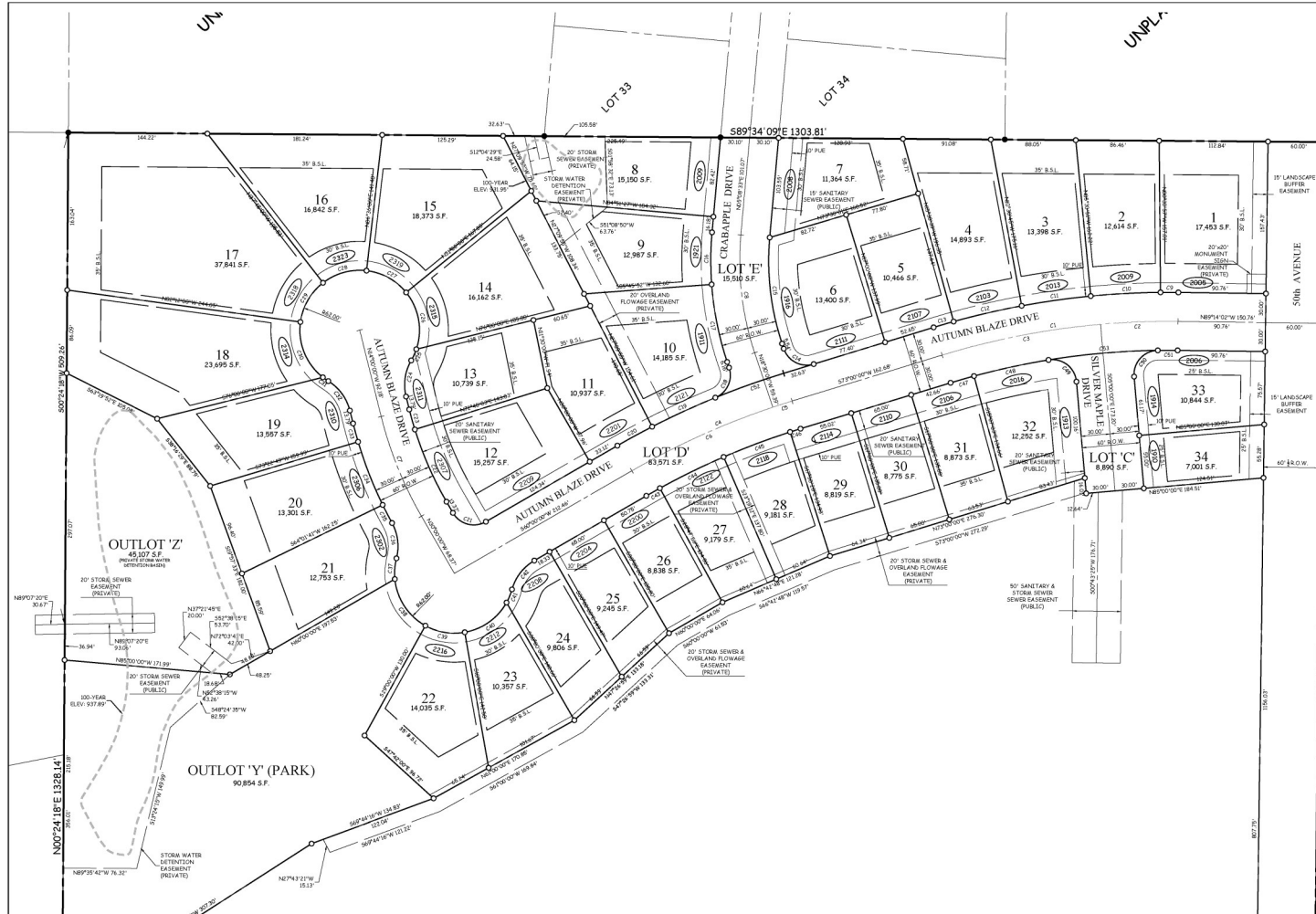
<https://www.tanzanitehomes.com/>



KRM Development and Tanzanite Homes does not guarantee the information describing these properties. Interested parties are advised to independently verify this information through personal inspection or with appropriate professionals. Prices are subject to change without notice.

Revised 9.2021

FINAL PLAT BLOOMING HEIGHTS SOUTH PLAT 1



LEGEND

—	PLAT BOUNDARY
▲	SECTION CORNER
●	FOUND CORNER, AS NOTED
○	SET CORNER 5/8" I.R. W/ YELLOW CAP #13156
I.R.	IRON ROD
G.P.	GAZ PIPE
d.	DEEDED DISTANCE
M.	MEASURED DISTANCE
R.	PREVIOUSLY RECORDED DISTANCE
P.U.E.	PUBLIC UTILITY EASEMENT
③③③	ADDRESS
B.S.L.	BUILDING SETBACK LINE
N.R.	NOT RADIAL



10640 Justin Dr. | Urbandale, Iowa 50322

515.243.1191 | kirk@krmdev.com

<https://www.krmdev.com/>

<https://www.tanzanitehomes.com/>



KRM Development and Tanzanite Homes does not guarantee the information describing these properties. Interested parties are advised to independently verify this information through personal inspection or with appropriate professionals. Prices are subject to change without notice.

Revised 9.2021