



CLIVE, IOWA

DATE OF SURVEY: NOVEMBER

OWNER / DEVELOPER

SHADOW CREEK ESTATES, LLC
 & SHADOW CREEK V, LLC
 2400 NW 85TH STREET, SUITE 24
 URBANDALE, IA 50322

ENGINEER / SURVEYOR

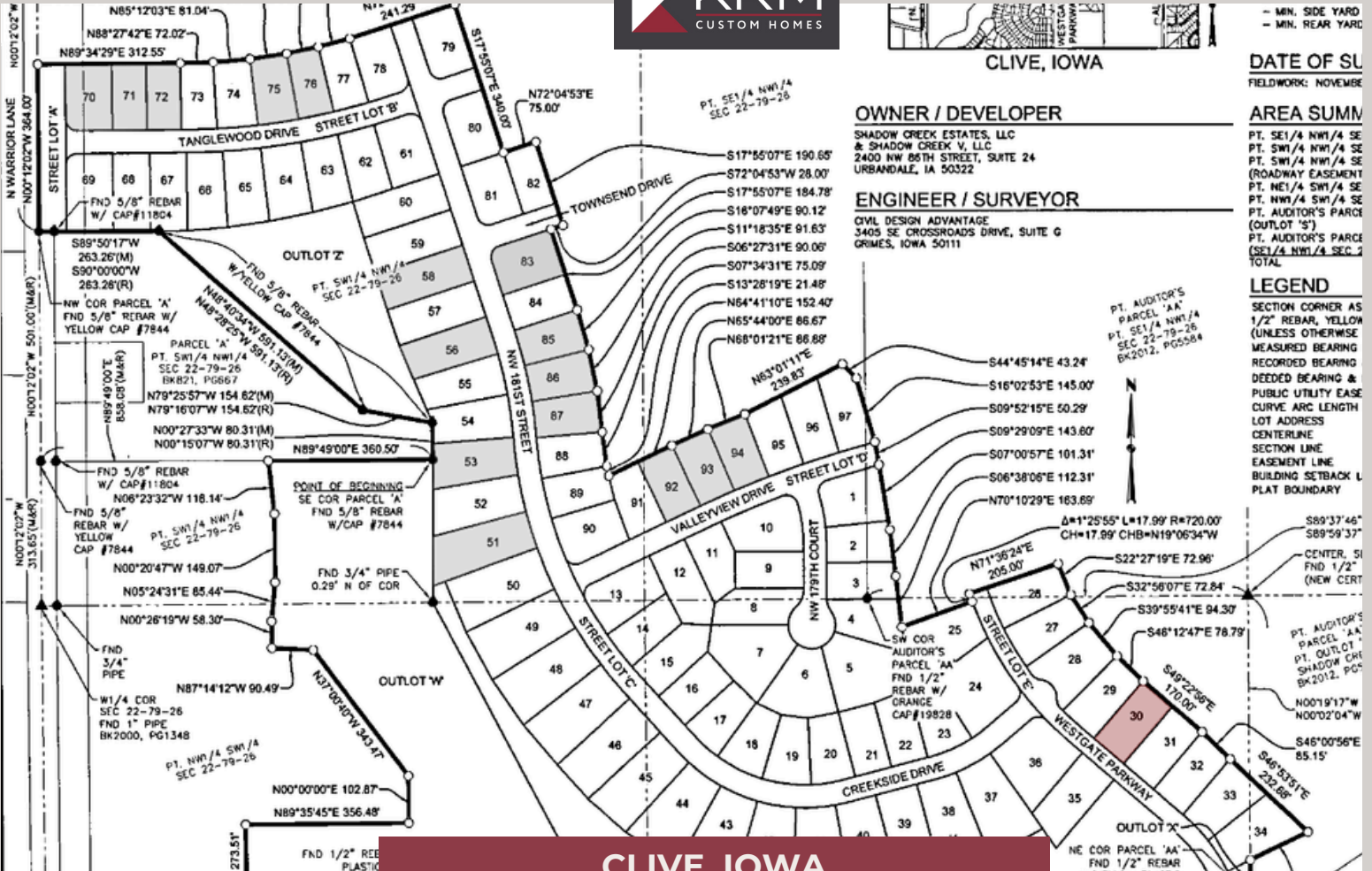
CIVIL DESIGN ADVANTAGE
 3405 SE CROSSROADS DRIVE, SUITE G
 GRIMES, IOWA 50111

AREA SUMMARY

PT. SE 1/4 NW 1/4 SE
 PT. SW 1/4 NW 1/4 SE
 PT. SW 1/4 NW 1/4 SE
 (ROADWAY EASEMENT
 PT. NE 1/4 SW 1/4 SE
 PT. NW 1/4 SW 1/4 SE
 PT. AUDITOR'S PARCE
 (OUTLOT 'S')
 PT. AUDITOR'S PARCE
 (SE 1/4 NW 1/4 SEC. 2
 TOTAL

LEGEND

SECTION CORNER AS
 1/2" REBAR, YELLOW
 (UNLESS OTHERWISE
 MEASURED BEARING
 RECORDED BEARING
 DEEDED BEARING &
 PUBLIC UTILITY EASE
 CURVE ARC LENGTH
 LOT ADDRESS
 CENTERLINE
 SECTION LINE
 EASEMENT LINE
 BUILDING SETBACK L
 PLAT BOUNDARY



CLIVE, IOWA

SHADOW CREEK

PLAT 6

Lot #	Address	Sq. Ft.	GOR/GOL	Price	Status	Configuration
30	3865 Westgate Pkwy	14,025	GOL	\$150,000	Available	Walkout
31	3857 Westgate Pkwy	14,025			SOLD	Walkout
38	17872 Creekside Dr	20,222			SOLD	Walkout/Backs to trees
39	17914 Creekside Dr	18,617			SOLD	Walkout/Backs to trees
40	17932 Creekside Dr	19,631			SOLD	Walkout
51	3974 NW 181st St	20,888			SOLD	Walkout
52	3992 NW 181st St	18,180			SOLD	Walkout

CONTACT US FOR MORE INFO.

515-243-1191

sales@krmdev.com

