



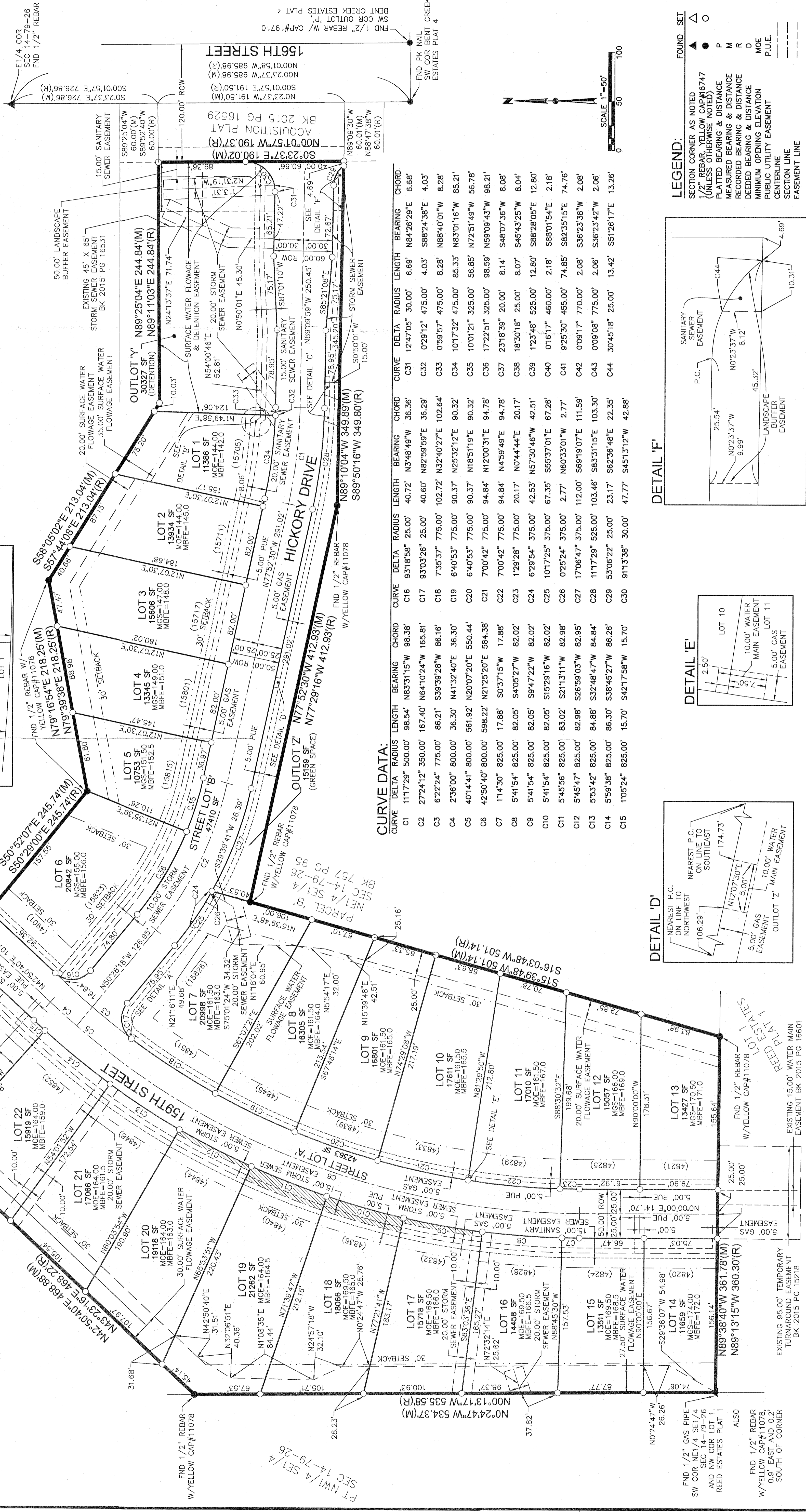
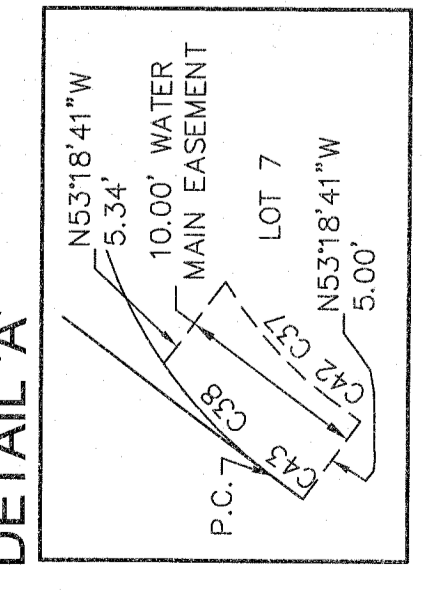
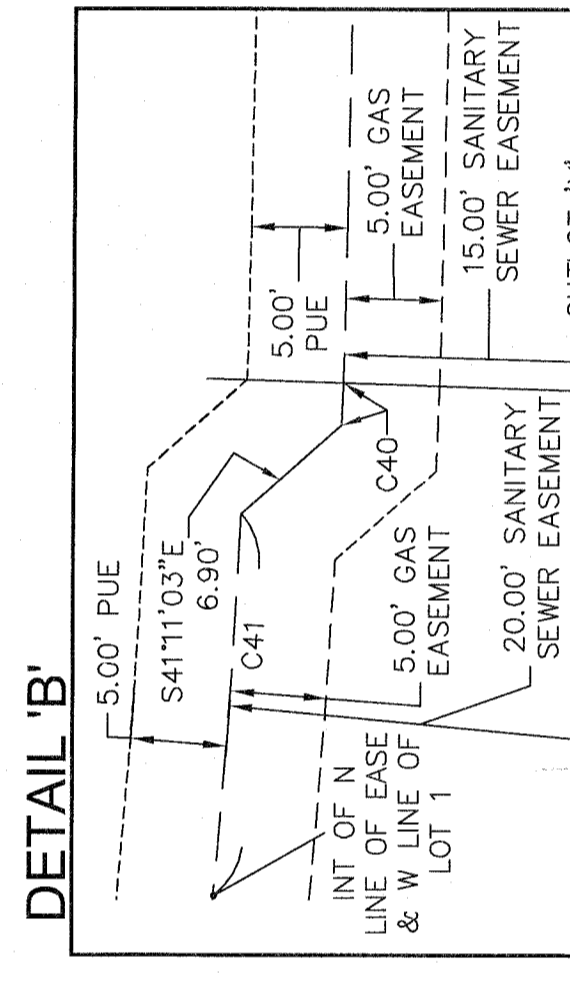
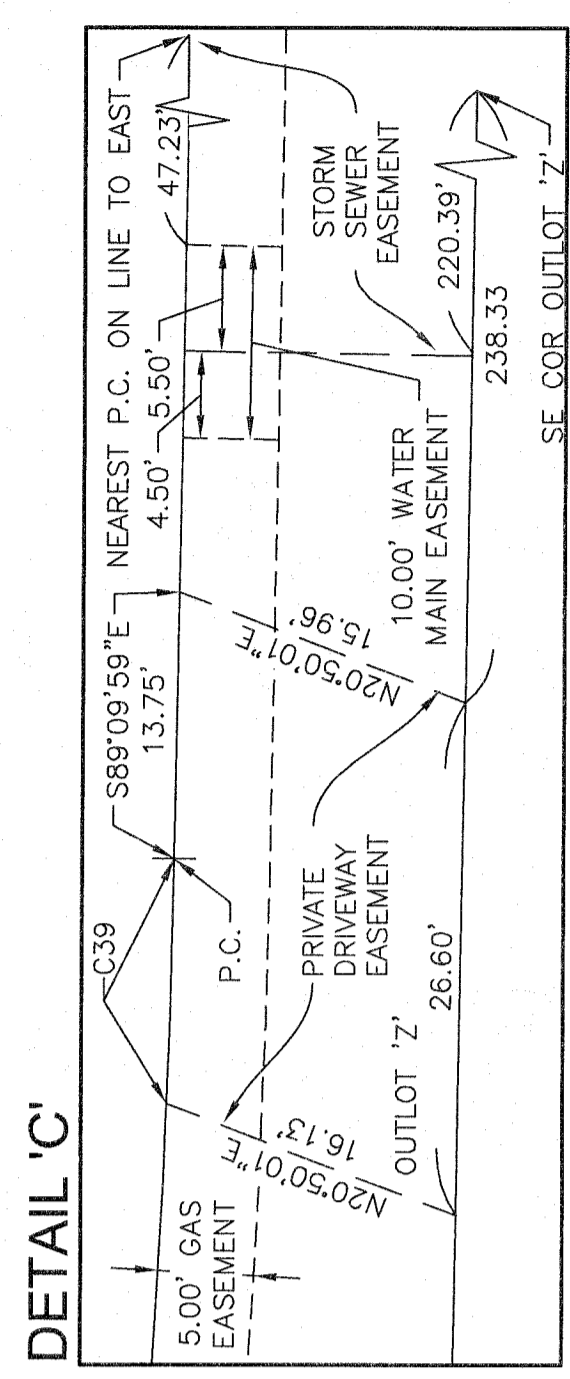
# BENT TREE CROSSING FINAL PLAN

# BENT TREE CROSSING FINAL PLAN

2 / 2  
1501.032

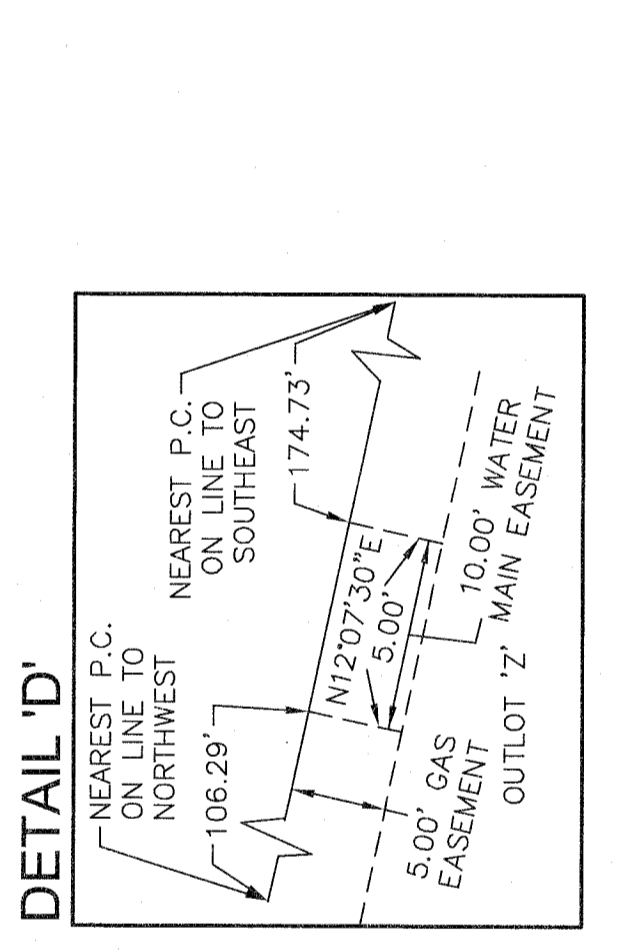
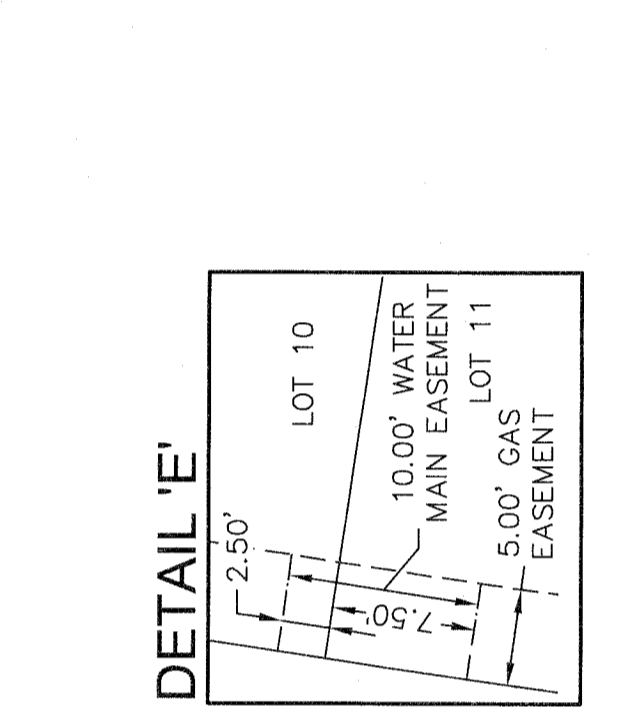
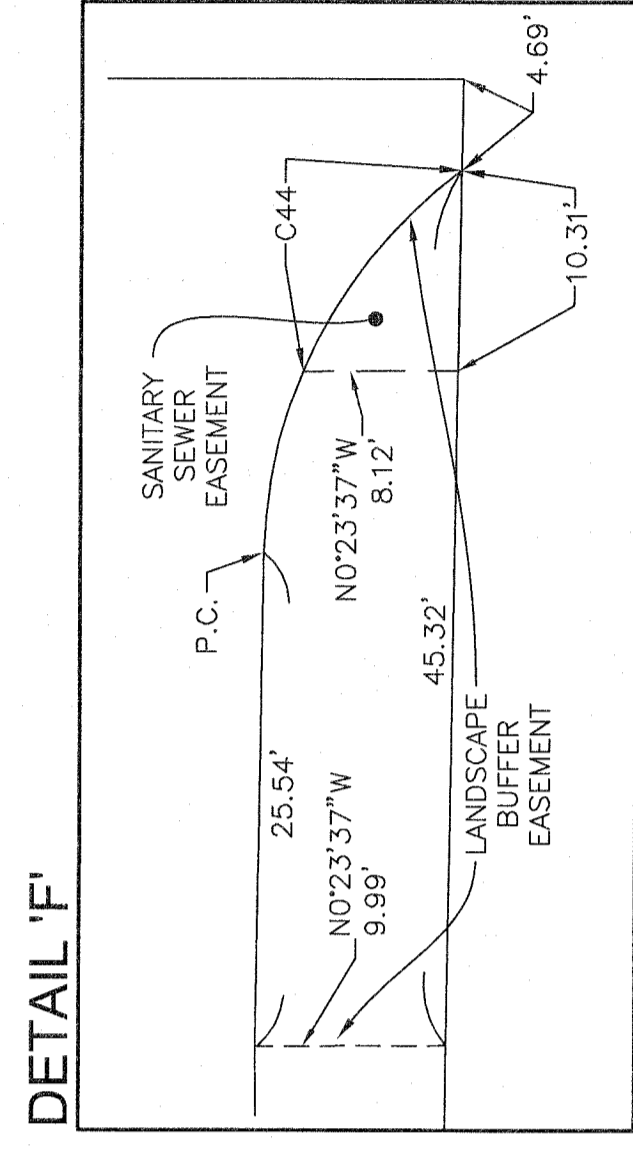
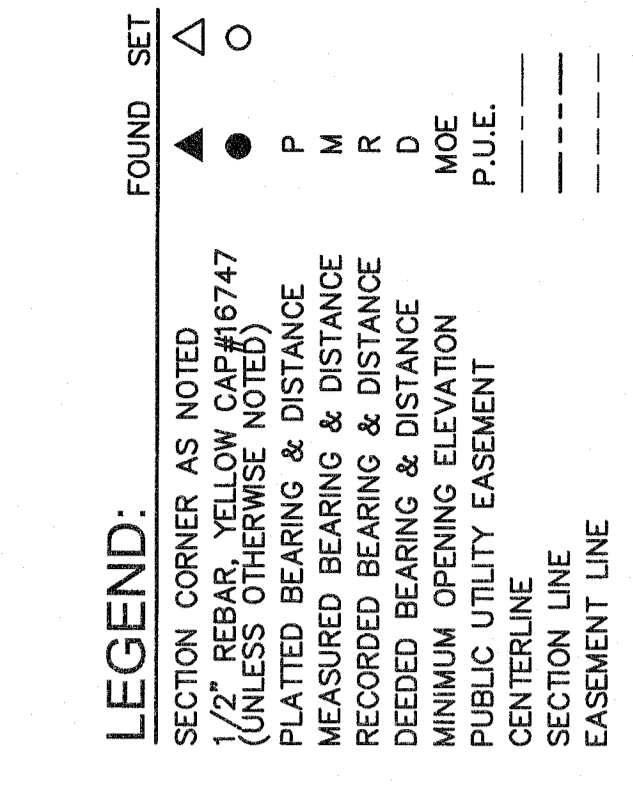
DATE	REVISIONS
12/16/15	THIRD SUBMITTAL
12/01/15	SECOND SUBMITTAL
10/16/15	FIRST SUBMITTAL

3405 S.E. CROSSROADS DRIVE, SUITE G  
GRIMES, IOWA 50111  
PHONE: (515) 369-4100 FAX: (515) 369-4410  
TECH: \_\_\_\_\_  
ENGINEER: \_\_\_\_\_  
CIVIL DESIGN ADVANTAGE  
URBANDALE, IOWA



**CURVE DATA:**

CURVE	DELTA	RADIUS	LENGTH	BEARING	CHORD	CHORD BEARING	RADIUS	LENGTH	BEARING	CHORD	CHORD BEARING			
C1	111°7'29"	500.00'	98.54'	N83°31'15"W	98.38'	40.72'	N3°48'49"W	36.36'	C31	12°47'05"	30.00'	6.66'	N84°26'29"E	6.66'
C2	27°24'12"	350.00'	167.40'	N64°10'24"W	165.81'	40.60'	N82°59'59"E	36.29'	C32	0°29'12"	475.00'	4.03'	S88°24'38"E	4.03'
C3	6°22'24"	775.00'	86.21'	S39°39'28"W	86.16'	102.72'	N32°40'27"E	102.64'	C33	0°59'57"	475.00'	8.28'	N88°40'01"W	8.28'
C4	2°36'00"	800.00'	36.30'	N41°32'40"E	36.30'	90.37'	N25°32'12"E	90.32'	C34	10°17'32"	475.00'	85.33'	N83°01'16"W	85.21'
C5	40°14'41"	800.00'	561.92'	N20°07'20"E	550.44'	94.84'	N18°51'19"E	90.32'	C35	10°01'21"	325.00'	56.85'	N72°51'49"W	56.78'
C6	42°50'40"	800.00'	598.22'	N21°25'20"E	584.38'	94.84'	N12°00'31"E	94.78'	C36	17°22'51"	325.00'	98.59'	N59°09'43"W	98.21'
C7	11°4'30"	825.00'	17.88'	S0°37'15"W	17.88'	700.42'	N4°58'49"E	94.78'	C37	23°18'39"	20.00'	8.17'	S48°07'36"W	8.08'
C8	5°41'54"	825.00'	82.05'	S4°05'27"W	82.02'	700.42'	N4°58'49"E	94.78'	C38	18°30'18"	25.00'	8.04'	S45°43'25"W	8.04'
C9	5°41'54"	825.00'	82.05'	S9°47'22"W	82.02'	700.42'	N4°58'49"E	94.78'	C39	1°23'48"	525.00'	12.80'	S88°28'05"E	12.80'
C10	5°41'54"	825.00'	82.05'	S15°29'16"W	82.02'	700.42'	N4°58'49"E	94.78'	C40	0°16'17"	460.00'	2.18'	S88°01'54"E	2.18'
C11	5°45'56"	825.00'	83.02'	S21°13'11"W	82.98'	700.42'	N4°58'49"E	94.78'	C41	9°25'30"	455.00'	74.85'	S82°35'15"E	74.76'
C12	5°45'47"	825.00'	82.98'	S26°59'03"W	82.95'	700.42'	N4°58'49"E	94.78'	C42	0°09'17"	770.00'	2.08'	S36°23'38"W	2.08'
C13	5°53'42"	825.00'	84.88'	S32°48'47"W	84.84'	700.42'	N4°58'49"E	94.78'	C43	0°09'08"	775.00'	2.06'	S36°23'42"W	2.06'
C14	5°59'38"	825.00'	86.30'	S38°45'27"W	86.26'	700.42'	N4°58'49"E	94.78'	C44	30°45'18"	25.00'	13.42'	S51°26'17"E	13.26'
C15	1°05'24"	825.00'	15.70'	S42°17'58"W	15.70'	700.42'	N4°58'49"E	94.78'	C45	91°13'38"	30.00'	47.77'	S45°13'12"W	42.88'



FILE: H:\2015\1501032\DWG\1501032-TM.L PLOT/DWG 2:20 PM  
 PLOT BY: MKC/EE  
 PLOT DATE: 12/16/15  
 TECH: \_\_\_\_\_  
 ENGINEER: \_\_\_\_\_  
 COMMENT: \_\_\_\_\_